

SEGRO Logistics Park East Midlands Gateway (EMG2)

Public Consultation

SEGRO is proposing a new development, known as East Midlands Gateway Phase 2 (EMG2) which will enable economic growth in the East Midlands, provide much-needed employment space, and deliver long-term sustainability benefits. EMG2 forms part of the East Midlands Freeport, and would see improvements made at the existing East Midlands Gateway (EMG1) rail freight terminal nearby.

The development is a Nationally Significant Infrastructure Project, and as such, an application for Development Consent has to be made to the Secretary of State.

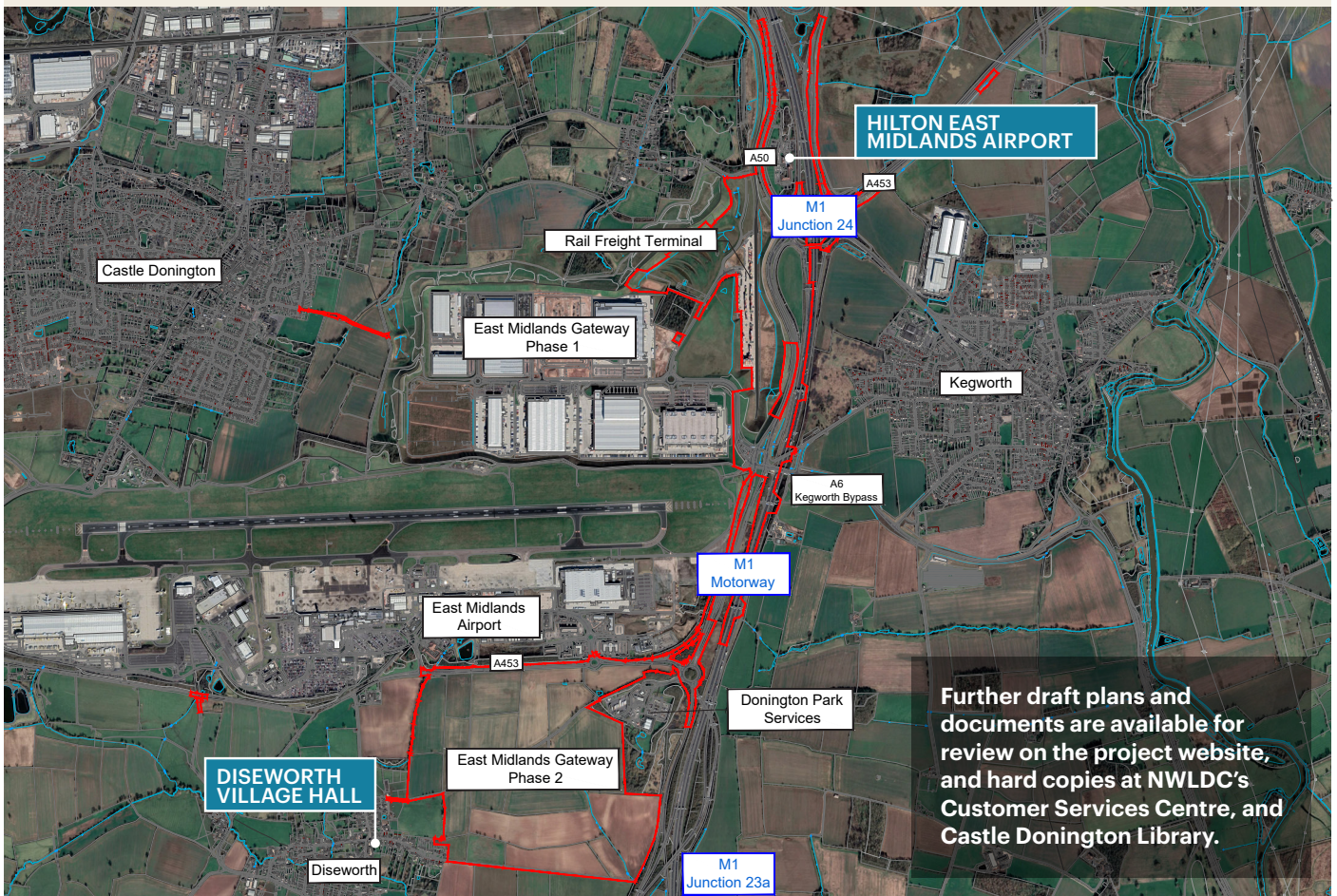
This newsletter is to inform you about SEGRO's public consultation being undertaken in February and March 2025, including two consultation exhibitions. A brief summary of EMG2 proposals is provided over the page, along with details about how to view and comment on the proposals.

EXHIBITION 1

10th February 2025 · 3pm – 7pm
Diseworth Village Hall
Hall Gate, Diseworth, DE74 2QJ

EXHIBITION 2

25th February 2025 · 3pm – 7pm
Hilton East Midlands Airport
M1, Junction 24, Derby Rd, Derby DE74 2YZ



EMG2 LOCATION AND PARAMETERS PLAN

The exhibitions will include large-scale display boards containing information about the proposals, and members of the project team will be present to discuss the proposals and answer questions.



The proposals for EMG2 include the following key components:

- **Employment Floorspace:** Up to 330,000 sq m of employment space (including 300,000 sq m on EMG2 and 30,000 sq m within the existing EMG1), and 100,000 sq m of mezzanine floors
- **New Estate Road:** A dedicated road network to serve the development zones
- **Bus Interchange Terminal:** A new bus terminal at the site entrance, replicating and building upon the sustainable travel strategy already in place at EMG1
- **Vehicular Access:** Direct access from the A453
- **Landscaping and Biodiversity:** Extensive landscaping along site boundaries, incorporating both new and preserved natural features to enhance biodiversity. This will include a substantial landscape screen with earthworks bunding on the western and southern edges of the site. Hyam's Lane will be retained to allow pedestrian and cyclist access through the site. Landscaping is also designed to include Sustainable Drainage Systems (SUDs)
- **Highway Improvements:** Upgrades to the local road network, including enhancements to Junction 24 of the M1 to increase traffic capacity and reduce congestion
- **Rail Freight Terminal Enhancements:** Improvements to the existing EMG1 rail terminal to boost operational capacity and efficiency.



Consultation Process and Next Steps

This statutory consultation will run from 3rd February to 17th March 2025 in line with the Statement of Community Consultation (SoCC), developed by SEGRO in consultation with NWLDC and LCC.

An online webinar will be held on Tuesday, 4th March, featuring a summary presentation and Q&A session. Timing and joining details will be available at segro.com/slpemg2 in due course.

After the consultation closes on 17th March 2025, all feedback will be reviewed and summarised in a Consultation Report to inform the final proposals. SEGRO expects to be in a position to submit the application in Spring 2025.

Comments on the proposals can be made by:

Completing the comments form available at each of the exhibitions

Post
EMG2
PO Box 11382
Nottingham
NG2 9AU

Online
via the 'contact us' page on:
segro.com/slpemg2



Further draft plans and documents are available for review on the project website, and hard copies at NWLDC's Customer Services Centre, and Castle Donington Library.